

Carriage Entranceway

Four of the six costumes on display in this exhibition can be seen in the new Costume Gallery. These are being shown at the Royal Opera House for the first time and cover Joan Sutherland's career at Covent Garden from its beginnings in 1952 through to 1988.

Far Left Case

This stunning dress and cloak were designed by Michael Stennett and worn by Sutherland as Lucrezia in Act I, scene 2 of *Lucrezia Borgia*, 1980.

Left Case

This costume was designed by Franco Zeffirelli and worn by Joan Sutherland in the role of Violetta in Act II of the 1960 revival of *La traviata*.

Right Case

This is the earliest Sutherland costume in the Collection, designed by Alan Barlow and worn by Sutherland as Clotilde in the 1952 production of *Norma*, alongside Maria Callas, who appeared as Norma.

Far Right Case

The dress on display here was designed by John Pascoe and worn by Sutherland in the title role in *Anna Bolena* (1988). The bodice is decorated with a cameo which contains a portrait of Joan Sutherland.

Right Sutherland in the title role of *Lucrezia Borgia*, 1980 *Christina Burton* and costume ©ROH Collections
Far right costume for *Anna Bolena*, 1988 ©ROH Collections



G

Carriage Entranceway



Green Main Exhibition: 'Dame Joan Sutherland: a Tribute'
Red Piazza Link Exhibition



Foyer Link

This section of the exhibition provides a rare glimpse into the world behind the Main Stage during Sutherland's illustrious career, where she would often be seen enjoying a break with members of the Chorus in the backstage areas. Photographs on display include rehearsal and behind the scenes shots, as well as images from her last public visit to the Royal Opera House. Also displayed is the programme for her farewell appearance as a guest in Strauss' *Die Fledermaus* in 1990, when she was joined by her great friends and colleagues Luciano Pavarotti and Marilyn Horne.

Left Sutherland on tour in Bulawayo, Rhodesia (now Zimbabwe) with the Covent Garden Opera Company, 1953 *Edgar Evans*

Centre Maria Callas visits Sutherland backstage after a performance of *Lucia di Lammermoor*, 1959 *London News Agency*

Right Sutherland enjoying a tea-break during a rehearsal of *The Midsummer Marriage*, 1955 *Keystone Press Agency*



Cloakroom Corridor

Joan Sutherland joined the Covent Garden Opera Company in the Autumn of 1952 on a salary of £10 per week. She spent the next seven years taking on a number of increasingly significant roles. This area of the exhibition features costumes, headdresses and images from some of these productions and beyond.

Rear Left Case

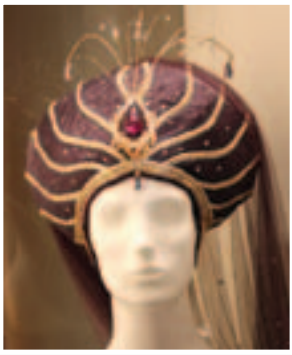
Dress designed by Barbara Hepworth and worn by Joan Sutherland as Jenifer in Act I of the Covent Garden Opera Company production of *The Midsummer Marriage*, 1955.

Rear Right Case

These jacket and breeches were designed by Marcel Escoffier and worn by Sutherland as Marie in Act I of the 1966 production of *La Fille du régiment*.

Front Cases

Two eye catching headdresses and a necklace designed by Michael Stennett and worn by Sutherland as Lucrezia Borgia in 1980.



Right Sutherland as Marie in *La Fille du régiment*, 1966, and costume *Houston Rogers*/©V&A Images/V&A Theatre Collections; ©ROH Collections
Left Headdress from *Lucrezia Borgia*, 1980 ©ROH Collections



G

Cloakroom Corridor



Welcome

DAME JOAN SUTHERLAND A TRIBUTE

The first exhibition of the 2011/12 Season pays tribute to legendary soprano Dame Joan Sutherland, who began her professional career at the Royal Opera House in 1952. This exhibition gives a comprehensive overview of her incredible career, from her early days with the Covent Garden Opera Company and her landmark performance in *Lucia di Lammermoor* in 1959, through to her farewell appearance on the Royal Opera House stage in 1990.

Items exhibited include costumes, headdresses and jewellery from productions such as *Lucrezia Borgia* designed by Michael Stennett, and *La traviata* designed by Franco Zeffirelli. There are also photographs, programmes and posters on display that recall some of her most celebrated roles at the Royal Opera House.

Costume conservation and preparation generously supported by The Leche Trust

Joan Sutherland as Lucia and Margreta Elkins as Alisa in *Lucia di Lammermoor*, 1959 *Roger Wood Photographic Collection*/©ROH Collections

DAME JOAN SUTHERLAND A TRIBUTE

Exhibition Trail Guide 19 September 2011– 11 February 2012



About Royal Opera House Collections

Material in the Royal Opera House Collections records the history of the three theatres that have stood on the Covent Garden site since 1732, and the performances they have housed. The majority of material in the Collections is generated through the work of the Royal Opera House and its different departments. Additionally, ROH Collections commissions and generates material through specific project work, and houses Special Collections that have been donated or purchased. Each Season, between September and August, there are two main exhibitions at the Royal Opera House, which can be seen throughout the building. For further details visit www.rohcollections.org.uk.

Please note that not all areas of the House are open at all times. If you have any queries, please ask one of the stewards.



FORTHCOMING EXHIBITIONS

Monica Mason

A life with The Royal Ballet

Royal Opera House
Late February 2012– July 2012

Monica Mason, Director of The Royal Ballet, trained at The Royal Ballet School and joined The Royal Ballet as a member of the corps de ballet when Ninette de Valois was Director of the Company. She has worked with every succeeding Director of The Royal Ballet in a career which has spanned more than 50 years. The exhibition will examine the different stages of her career using costumes, photographs and press cuttings from Royal Opera House Collections as well as material lent by Mason herself.

Left Monica Mason rehearsing Principal Sarah Lamb for *The Sleeping Beauty* Johan Persson

Front cover Joan Sutherland as Amina in *La sonnambula*, 1960
Donald Southern Photographic Collection/©ROH Collections

Box Office +44 (0)20 7304 4000
Online booking www.roh.org.uk



Supported by
**ARTS COUNCIL
ENGLAND**

2

Amphitheatre Bar

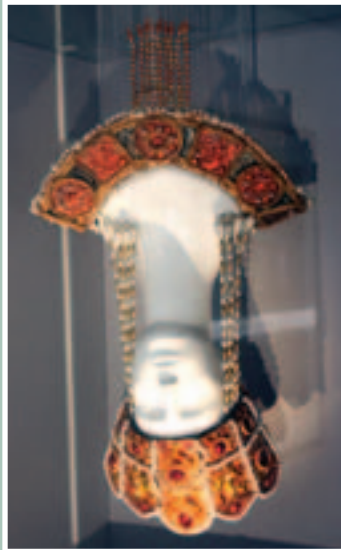
Main Exhibition: 'Dame Joan Sutherland: a Tribute'



Amphitheatre Bar
Sutherland's last full performance at the Royal Opera House was as the title role in Donizetti's *Anna Bolena* in 1988, and as you make your way out into the Amphitheatre Bar you can see the poster and headress from this production in the case on the right. The other case in the Amphitheatre Bar features the elaborate headress and necklace from the 1983 production of *Esclarmonde*, designed by Beni Montresor.



Left Poster from the 1988 production of *Anna Bolena* by Benji Dewinters
Above Headress from *Esclarmonde*, 1983
©ROH Collections



2

Amphitheatre Gallery

This section of the exhibition provides a fascinating photographic overview of Sutherland's career at the Royal Opera House from 1952 until 1990. It features many never before seen photographs of performances featuring her and those she worked with, as well as a selection of posters.
The first set of photographs here cover Sutherland's early career with the Covent Garden Opera Company up to just before her breakthrough appearance in *Lucia di Lammermoor*. They then move on to this landmark production and the years immediately after, as she took on more and more title roles at the Royal Opera House.
The gallery finishes with shots from 1966 up until her last full performance here in 1988.



From left to right: in *Lucia di Lammermoor*, The Magic Flute and Norma
Donald Southern Photographic Collection/©ROH Collections

